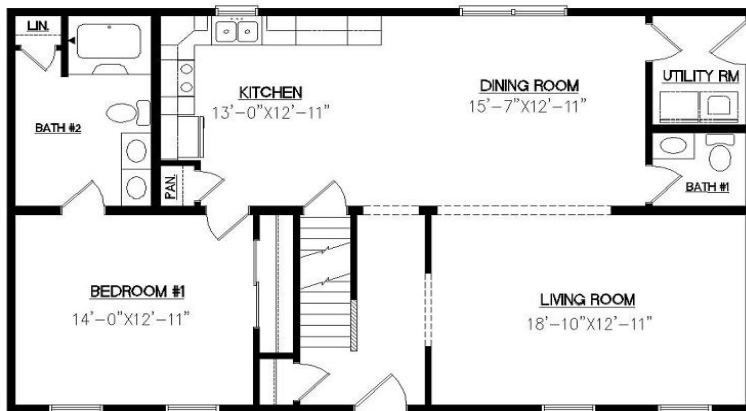


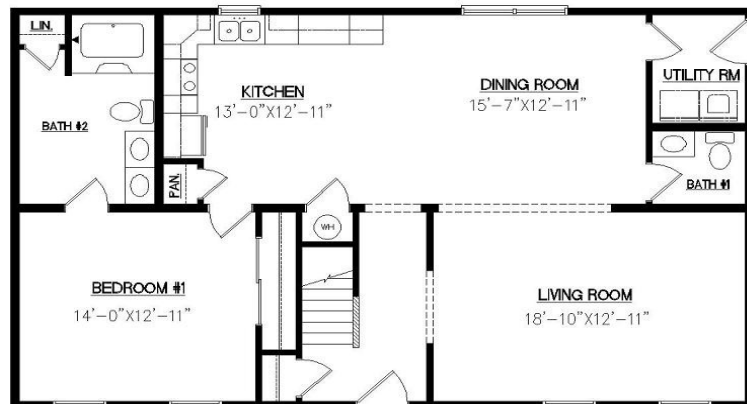
***Jamesport***



Note: Renderings are for illustrative purposes only and may vary per series standard specifications.



**First Floor  
(w/ Basement)**



**First Floor  
(w/ Crawl Space)**

*Note: Proposed second floor available upon request.*

**Cape**  
**27'-6" x 44'-0"**  
**1210 SQFT**  
**1 Bedroom / 1.5 Baths**

246 Sand Hill Road • Selinsgrove, PA 17870  
Phone: 570-374-3280 • Fax: 570-374-1122  
[www.iconlegacy.com](http://www.iconlegacy.com)

