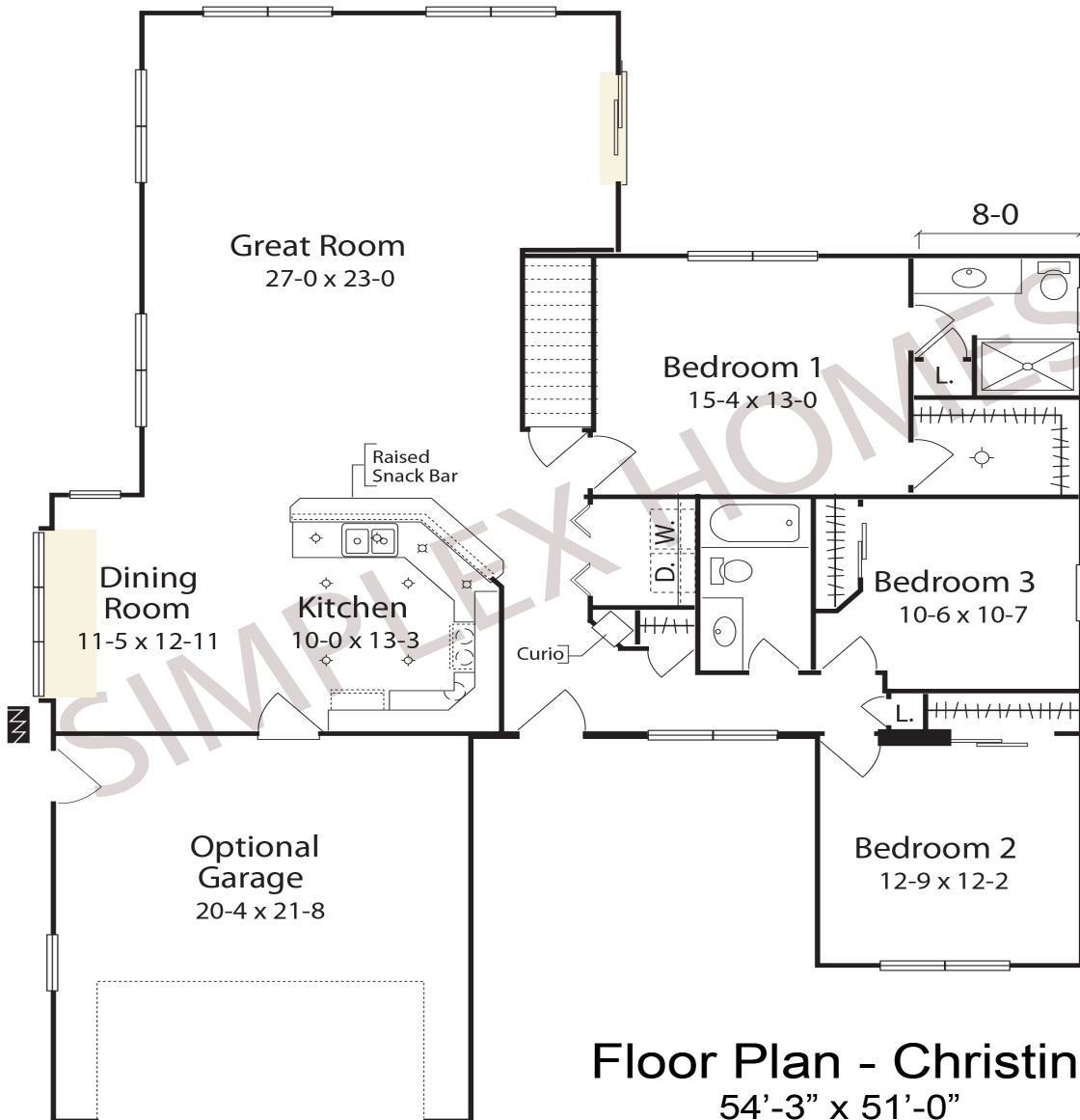




The Christina



Floor Plan - Christina
54'-3" x 51'-0"
1856 sq ft

All plans are protected by copyright laws and may not be reproduced without permission



Custom Select
Christina

A feeling of spaciousness is what you'll notice with this efficient floor plan. A charming little porch enhances the entryway as you step into the wonderfully transitional foyer. Leading off to the right you will find 2 bedrooms and a full bath tucked away from the main living area to create a feeling of privacy. Straight ahead from the foyer with its built in lighted curio display you'll be delighted with the spacious vaulted ceiling in the great room also featuring a stone fireplace with entertainment area. A fantastic kitchen and dining space take full advantage of the openness into the great room with its ceiling to floor window views flanking the stone fireplace. You'll love entertaining guests and family! To the right of the great room is a nicely situated master suite to complete this unique floor plan. Note: When optioning a vaulted ceiling in great room, an 8/12 roof truss is used on this portion of the home.

This model is on display at Simplex Industries in Scranton, PA.